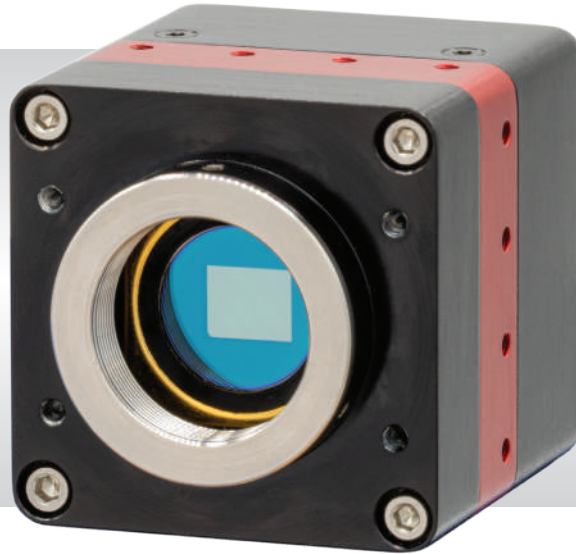


Owl 640 N

Ultra low noise, digital VIS-SWIR camera,
640 x 512 • 15µm x 15µm Pixel Pitch • 18 electrons •



Key Features and Benefits

The best performing VIS-SWIR camera in the World!

- **Ultra low noise sensor**
Enables ultimate night vision VIS-SWIR image
- **VIS-SWIR technology**
Compatible with VIS-SWIR illuminators, markers & pointers
- **15µm x 15µm pixel pitch**
Enables highest resolution VIS-SWIR image
- **On-board Automated Gain Control (AGC)**
Enables clear video in all light conditions
- **Ultra compact, Low power**
Ideal for hand-held, mobile or airborne systems

Resolution	640 x 512
------------	------------------

Frame rate	Up to 120Hz
------------	--------------------

Readout noise	18 electrons
---------------	---------------------

Wavelength Range	VIS-SWIR
------------------	-----------------

Specification for Owl 640 N

Sensor Type	InGaAs PIN-Photodiode
Active Pixel	640 x 512
Pixel Pitch	15µm x 15µm
Active Area	9.6mm x 7.2mm
Spectral response ¹	0.6µm to 1.7µm
Noise (RMS) LG = Low Gain HG=High Gain	LG: <175e- (150e- typically) HG: <22e- (18e- typically)
Peak Quantum Efficiency	>90% @1.3µm
Pixel Well Depth	Low Gain: >250ke-, High Gain: >10ke-
Pixel Operability	>99.5%
Dark Current (e/p/s)	12,500 @ 15°C
Digital Output Format	14 bit CameraLink (Base Configuration) /SDR
Exposure Time	1µs to 1 / frame rate
Shutter Mode	Global shutter
Frame Rate	Up to 120Hz programmable, 25ns resolution
Dynamic Range (Typical) LG = Low Gain HG=High Gain	LG: 62dB HG: 55dB
Optical Interface	C mount
Trigger interface	Trigger IN and OUT - TTL compatible
Power supply	12V DC +/- 0.5V
TE Cooling	Active
Image Correction	3 point NUC (offset, Gain & Dark Current) + pixel correction
Functions controlled by serial communication	Exposure, intelligent AGC, Non Uniformity Correction, Gamma, Pk/Av, TEC, ROI
Camera Power Consumption ²	<4W (TEC ON, NUC ON)
Operating Case Temperature ³	-20°C to +55°C
Storage Temperature	-30°C to +60°C
Dimensions (L*W*H) ⁴	69.4mm x 50mm x 50mm
Weight	282g

Raptor Photonics Limited reserves the right to change this document at any time without notice and disclaims liability for editorial, pictorial or typographical errors.

Ordering Information

Camera

Owl 640 N Digital Camera	NO1.7-VS-CL-640
OWL Power Supply Cable	RPL-HR4-K

Optional Accessories

Mini PC with XCAP STD and frame grabber	RPL-PC-mf2280
Thunderbolt frame grabber	RPL-mf2280
EPIX(R) base CL card	RPL-EPIX-EB1
EPIX(R) XCAP STD software	RPL-XCAP-STD
MDR-SDR CameraLink Cable (2m) ⁵	RPL-MCL-CBL-2M
Optical SWIR lenses ⁶	RPL-xx-xxxx

Note 1: Optional filters available: Low, High or bandpass
Note 2: Measured in an ambient of 25°C with adequate

heat sinking. For more detailed power consumption values, please refer to the user manual.

Note 3: Extended Operating Temperature range on request

Note 4: Dimensions include all connector parts on camera interface

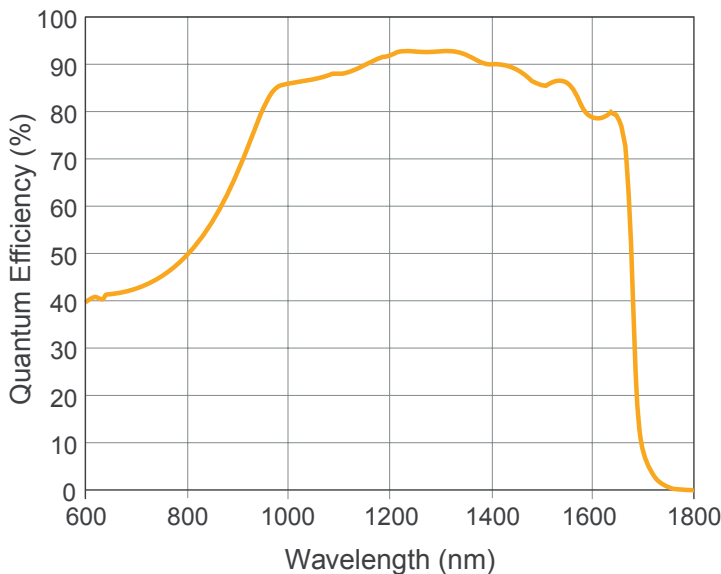
Note 5: Longer CL cable available

Note 6: Please consult us to check our range of lenses

Demo is available on request.
Pricing AOR subject to volumes.

Detailed technical drawings
can be downloaded at
www.raptorphotonics.com

Quantum Efficiency



*Data supplied by sensor manufacturer

Applications

Surveillance

- 860, 1064 & 1550nm laser line detection
- Active Imaging
- Airborne Payload
- Hand Held Systems
- Imaging through Fog
- Range Finding
- Vision enhancement

Scientific

- Astronomy
- Beam Profiling
- Hyperspectral Imaging
- Semiconductor Inspection
- Solar Cell Inspection
- Thermography

Document #: USNO1.7-VS-CL-640 0322