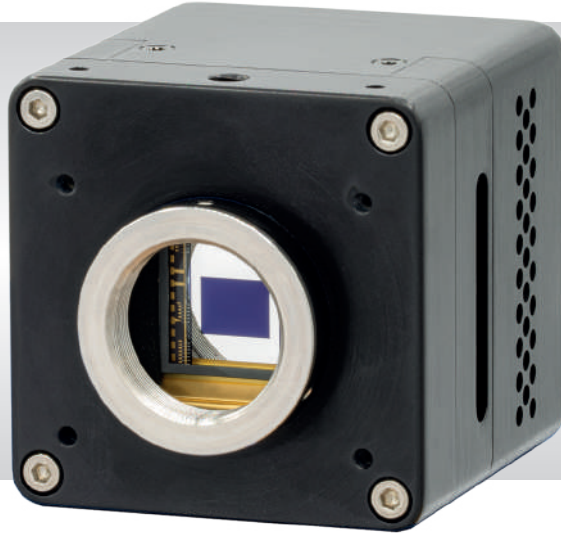


# Hawk 252 Blue

High Resolution, Ultra Sensitive UV optimised Digital EMCCD Camera  
1280 x 1024 • 25Hz • Digital •



## Key Features and Benefits

*Cooled HD EMCCD Camera*

- **1280 x 1024, 8 $\mu$ m pitch EMCCD technology**  
Enables highest resolution imaging from 0.3 $\mu$ m to 1.1 $\mu$ m
- **65% QE at 254nm**  
Using a UV optimized window
- **Back Illuminated UV EMCCD technology**  
Offers a broadband response from the UV to the NIR

Resolution	<b>1280 x 1080</b>
Frame Rate	<b>25Hz</b>
Dynamic Range	<b>55dB</b>
Peak QE	<b>65% QE @ 254nm</b>

## Specification for Hawk 252 Blue

Sensor Type	1" Back Thinned Frame Transfer EMCCD
Active Pixel	1280 x 1024
Frame Rate	25Hz
Pixel Size	8µm x 8µm
Active Area	10.24 mm x 8.192 mm
Dynamic Range	55dB
Anti-blooming	Standard
Spectral Response	254-1050nm
Peak Quantum Efficiency	65% @ 254nm
Non-Linearity	<1%
Readout Noise	EM Gain ON: <0.01e- EM Gain OFF: <60e-
Total Power Consumption	<20W (TEC ON, FAN ON)
Minimum Illumination	< 50µlux
Output Format	12 bit Camera Link (base configuration)
Synchronization	Trigger In & OUT - TTL compatible
Trigger Connector	SMA type
Cooling	Active, with fan
Lens Mount	C/mount, back focus capability
Power Connector	Hirose part code HR10A-7R-4PB
Power Supply	12V DC ±10%
Operating Temperature Range <sup>1</sup>	-20°C to +55°C
Storage Temperature Range	-40°C to +70°C
Dimensions (L*W*H) <sup>2</sup>	73.13mm x 62.00mm x 62.00mm
Weight (excluding lens)	350g

Raptor Photonics Limited reserves the right to change this document at any time without notice and disclaims liability for editorial, pictorial or typographical errors.

## Ordering Information

### Camera

Hawk EM252 Blue Digital camera	HK252UV-CL
Hawk EM252 Digital PSU	RPL-HR4-K-S

### Optional Accessories

Mini PC with XCAP Std and frame grabber	RPL-PC-mf2280
Thunderbolt frame grabber	RPL-mf2280
EPIX® EB1 frame grabber	RPL-EPIX-EB1
EPIX® XCAP software	RPL-XCAP-STD
Camera Link Cable (2m) <sup>3</sup>	RPL-CL-CBL-2M

### Lenses

Optical Visible & CCTV day/night lenses <sup>4</sup>	RPL-xx-xxxx
--	-------------

Note 1: Extended operating temperature range on request.

Note 2: Dimensions include all connector parts on the camera interface.

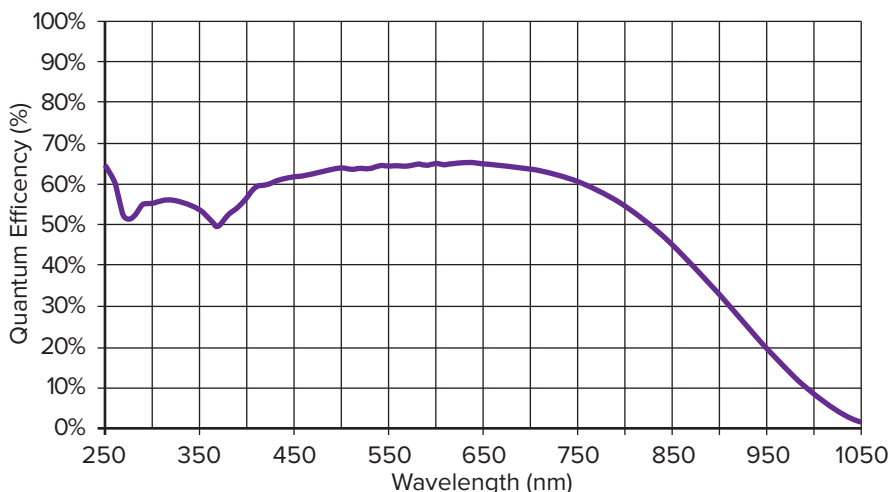
Note 3: Longer Camera Link cable available.

Note 4: Please consult us to check our range of lenses.

Demo is available on request.  
Pricing AOR subject to volumes.

Detailed technical drawings  
can be downloaded at  
[www.raptorphotonics.com](http://www.raptorphotonics.com)

## Quantum Efficiency



\*Data supplied by sensor manufacturer

## Applications

### Surveillance

- Ground Based Surveillance
- Airborne Surveillance
- Situational Awareness

### Scientific

- Astronomy
- Forensic Imaging
- Microscopy
- Fluorescence Imaging