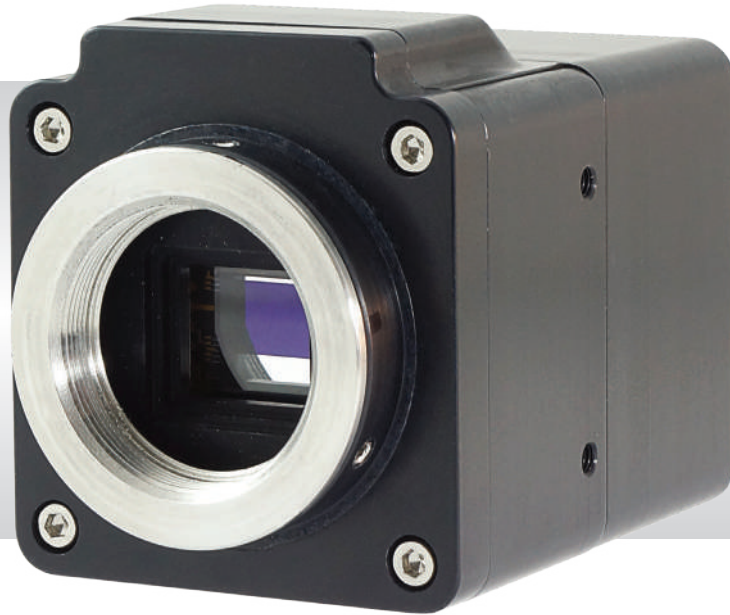


# Hawk 216-A

Ultra Sensitive Monochrome EMCCD camera  
768 x 576 • 25/30Hz • Analogue



Analogue

## Key Features and Benefits

*Cooled VGA Surveillance UV EMCCD*

- **Back Illuminated EMCCD technology**  
Enables ultimate sensitivity imaging (<math>50\mu\text{lux}</math>)
- **High QE: >90% @ 600nm**  
GEN III image intensifier performance
- **Enhanced blue response from 180nm**  
Low light UV with visible detection
- **Fan-less cooling**  
Ideal for integration and discrete low light surveillance

Resolution	<b>768 x 576</b>
Frame Rate	<b>25/30Hz</b>
Dynamic Range	<b>44dB</b>
Peak QE	<b>90% @ 500nm</b>

## Specification for Hawk 216-A

Sensor Type	2/3" full frame transfer	
	CCIR	EIA
Active Pixel	769 x 288	769 x 244
Frame Rate	25Hz	30Hz
Pixel Size	11.5µm x 23µm	11.5µm x 27µm
Active Area	8.832 mm x 6.624 mm	8.832 mm x 6.588mm
Iris Control	Video / DC	
Dynamic Range	44dB	
Anti-blooming	Standard	
Spectral Response	180-1100nm	
Peak Quantum Efficiency	>90% @550nm	
Total Power Consumption <sup>1</sup>	<8W (TEC ON, Steady State)	
Minimum Illumination	< 50µlux	
Video Connector	SMA type	
Resolution	625 TV lines	525 TV lines
Readout mode	Interlaced	
Cooling	Active, no fan	
Lens Mount	C mount, Back focus capability	
Output Format	1.0Vp-p, 75Ω, ECIR or EIA	
Power Connector	9 pin Micro-D connector	
Power Supply	12V DC ±10%	
Operating Temperature Range	-20°C to +55°C	
Storage Temperature Range	-40°C to +60°C	
Dimensions (L*W*H) <sup>2</sup>	75.05mm x 45.00mm x 50.00mm	
Weight (excluding lens)	<230g	

Raptor Photonics Limited reserves the right to change this document at any time without notice and disclaims liability for editorial, pictorial or typographical errors.

## Ordering Information

### Camera

Hawk EM216 Analogue camera - CCIR	HK216-AP
Hawk EM216 Analogue camera - EIA	HK216-AN
Power Supply Cable	RPL-MDM-CBL-B

### Optional Accessories

EPIX® Analogue video card	RPL-EPIX-SV5
Hawk PSU cable MDM to Jack + brick	RPL-MDM-CBL-J
Hawk PSU cable MDM to flying leads	RPL-MDM-CBL-F
Optical Lenses	RPL-xx-xxxx

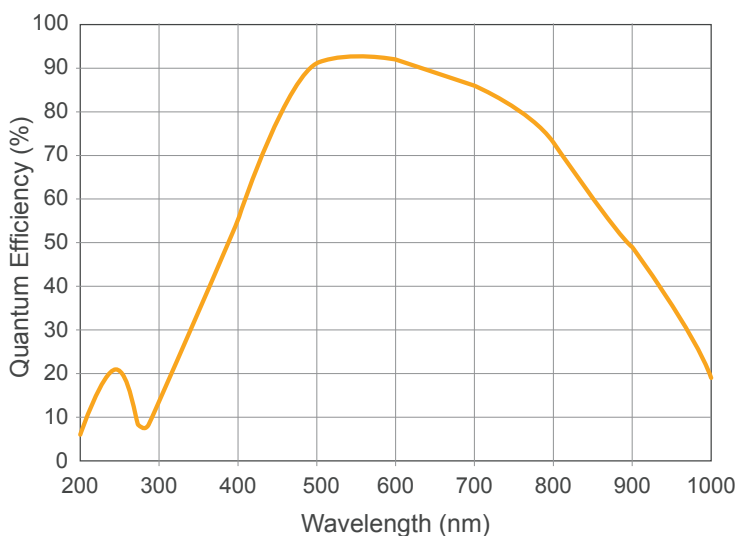
Note 1: Measured at a low ambient temperature with adequate heat sinking.

Note 2: Dimensions include all connector parts on the camera interface.

Demo is available on request.  
Pricing AOR subject to volumes.

Detailed technical drawings  
can be downloaded at  
[www.raptorphotonics.com](http://www.raptorphotonics.com)

## Quantum Efficiency



## Applications

### Surveillance

- Ground Based Surveillance
- Airborne Surveillance
- UV Imaging Blue Response
- Scientific Imaging
- Situational Awareness